

Atlantis

ATLANTIS FLUSH KITS

FUEL SYSTEMS
ENGINE/GASKETS
EXHAUST
DRIVE LINE HANDLING
ELECTRICAL
WATERLINE /BILGE
STEERING & CONTROLS
BODY
ACCESSORIES
SERVICE TOOLS /HARDWARE
CHEMICAL
FREESTYLE & 800SXR
FOUR STROKE



Sea Doo Part No. **A7001**
93-02 All Non-Rear Drain Pipe Models



Sea Doo Part No. **A7003**
95-02 Long Version of Rear Drain Pipe Model



Sea Doo Part No. **A7004**
96-02 Short Version of Rear Drain Pipe Model & 95-97 Sportster/challenger Jet Boat (Single Engine)



Sea Doo Part No. **A7006**
95-02 All with Rear Drain Pipe



Yamaha Part No. **A8588**
87-98 Long Yamaha All non-factory installed flush kits (Except 760/800/1200)



Yamaha Part No. **A8589**
87-98 Long Yamaha All non-factory installed flush kits (Except 760/800/1200) Quick Snap Type



Yamaha Part No. **A8582**
95-02 Factory replacement GP760/1100/1200 & Jet Boat



Tigershark Part No. **A5000**
All Model 94-99



Kawasaki Part No. **A2520**
89-91 Jet Ski, Ultra 150



Kawasaki Part No. **A2521**
92-02 Jet Ski Except ZXI/STX/Ultra 150



Kawasaki Part No. **A2522**
95-02 ZXI, STX, Ultra 130



Kawasaki Part No. **A2628**
03-05 4-Stroke Easy way to flush your new Kawasaki Jet Ski. Just screw on the fitting and leave it. Attach a quick-snap fitting to a garden hose and you are ready to flush.



Polaris Part No. **A6000**
90-02 (Except Direct Injection)



Polaris Part No. **A6001**
01-02 Direct Injection

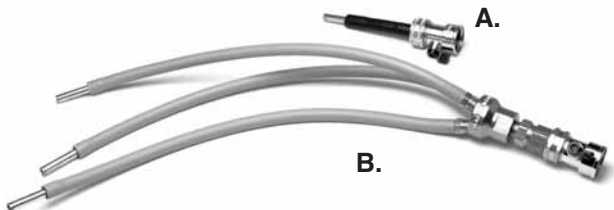


Honda Part No. **A5200**
2002 Models



Universal Part No. **A2690**
Male Quick Snap Adapter Only for replacement

BLOWSION



BLOWSION ENGINE FLUSH KITS

A must for salt water riders! All metal construction - easy to use - just push into aftermarket water bypass. No tools, clamps or extra hoses necessary. Back flushes entire cooling system instead of forcing salt and sand into cooling jackets. Use in conjunction with our salt terminator kit. Simple and effective.

Description	Part No.
A. Standard Flush Tool	AWAC172
B. SXR Flush Tool-Triple	AWAC170

*Salt Terminator: See Page 177



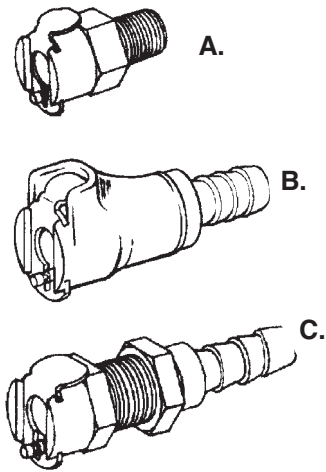
FLUSH KIT ADAPTER

Flush Kit Adapter for adapting overseas special size hose to connect flush kit.

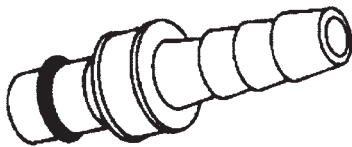
Description	Part No.
Flush Kit Adapter	SC-2905

QUICK CONNECT

The ultimate in waterline connections, the fittings are fool proof. These fittings are safe for high temperatures and high pressure.



Description	Part No.
<i>Female</i>	
A. 1/4" Pipe Thread	64-0100
B. 3/8" In Line	64-0103
C. 3/8" Panel Mount	64-0106



Description	Part No.
<i>Male (Barbed)</i>	
3/8" With shut off	64-0107
3/8" Without shut off	64-0109



Description	Part No.
1/2" Female in line	64-0117
1/2" Male in line	64-0115



SNAP CONNECT AND FLOW CONTROL

Snap Connect to Flush Kit, Flow Control to Water Hose end for quick connect and water control for flushing.

Description	Part No.
Snap Connect and Flow Control	SC-2900

BRASS FITTINGS



Straight Hose Barbed	Part No.
1/8" Thread 1/4" Hose	64-0001
1/8" Thread 3/8" Hose	64-0003
1/4" Thread 1/2" Hose	64-0005



90 Degree	Part No.
1/8" Pipe thread 3/8" Hose	64-0007
1/4" Pipe thread 1/2" Hose	64-0009
1/8" Pipe thread 1/4" Hose	64-0010



45 Degree	Part No.
1/8" Pipe thread 1/4" Hose	64-0065
1/8" Pipe thread 3/8" Hose	64-0066
1/4" Pipe thread 1/2" Hose	64-0067



T-Fitting	Part No.
Primer Fitting 1/8" x 1/8" x 1/8"	64-0015
Primer 1/4" x 1/4" x 1/8"	64-0017
Fuel Line 1/4" x 1/4" x 1/4"	64-0019



PLASTIC GARDEN HOSE ADAPTER

Description	Part No.
Garden Hose Adapter Cap	64-0029



Barb Connector	Part No.
1/4" I.D. Hose-1/4" I.D. Hose	64-0057
3/8" I.D. Hose-3/8" I.D. Hose	64-0058
1/2" I.D. Hose-1/2" I.D. Hose	64-0059



Garden Hose Adapter	Part No.
3/8"	64-0012
1/2"	64-0014



Brass Fitting	Part No.
1/8" Pipe threaded junction	64-0011
1/8" to 1/4" Adapter	64-0013
9mm Yamaha Flush Adapter	64-0004

PLASTIC FITTINGS



Plastic T Fitting	Part No.
3/8" x 3/8" x 3/8"	64-0025
1/2" x 1/2" x 1/2"	64-0027

Plastic Y Fitting	Part No.
3/8" x 3/8" x 3/8" (white)	64-0045
1/4" x 1/4" x 1/4" (white)	64-0046
1/4" x 1/4" x 1/4" (black)	64-0047

FUEL SYSTEMS
ENGINE/GASKETS
EXHAUST
DRIVE LINE HANDLING
ELECTRICAL
WATERLINE /BILGE
STEERING & CONTROLS
BODY
ACCESSORIES
SERVICE TOOLS /HARDWARE
CHEMICAL
FREESTYLE & 800SXR
FOUR STROKE

FUEL SYSTEMS
ENGINE/GASKETS
EXHAUST
DRIVE LINE HANDLING
ELECTRICAL
WATERLINE /BILGE
STEERING & CONTROLS
BODY
ACCESSORIES
SERVICE TOOLS /HARDWARE
CHEMICAL
FREESTYLE & 800SXR
FOUR STROKE



WATER LINE HOSE

Sold per foot.

Description	Part No.
3/8" Blue	56-8000
1/2" Black	56-8003
1/2" Blue	56-8004

*500 feet per reel. Call for special pricing on 500 feet reel purchases.



90 BYPASS FITTING

Fittings, machined aluminum. Anodized. Race legal.

Description	Part No.
Silver 3/8"	56-2010
Black 3/8"	56-2012
Silver 1/2"	COMFTG0115
Silver 3/8" UMI	JS-02000POL
Black 3/8" UMI	JS-02000BKA



GP1300R 1/2" X 1/2" BULKHEAD FITTINGS

The R&D Billet Aluminum Fitting allows for easy installation for extra cooling lines through the bulk head.

Description	Part No.
1/2" x 1/2" Bulkhead Fittings	660-00012



JET WORKS QUICK DISCONNECT WATER RESTRICTOR

See Page 66 for information and details.

Description	Part No.
Quick Disconnect Water Restrictor 3/8"	QD-38
Quick Disconnect Water Restrictor 1/4"	QD-14



WATER LINE HOSE

Sold per foot. Softer material. Easy to install for complicated water line setup.

Description	Part No.
3/8" Light Blue	56-8010



45° BYPASS FITTING

45 angled, anodized.

Description	Hose	Part No.
Silver	3/8"	56-2020
Black	3/8"	56-2028
Silver	1/2"	56-2030
Silver UMI	3/8"	JS-02001CLR
Black UMI	3/8"	JS-02001BKA



GP1300R/GP1200R 1/2" INLINE WATER FILTER

The R&D Billet Inline Water Filter utilizes a screw in stainless steel mesh screen to stop small particles of sand from entering the water way of the engine.

Description	Part No.
1/2" Inline Water Filter	660-00013



JET WORKS FLOW CONTROL VALVE

See Page 66 for information and details.

Description	Part No.
Standard Flow Control Valve 3/8"	52-3118
Pro Flow Control Valve 3/8"	52-3119
Pro Flow Control Valve 1/4"	52-3122



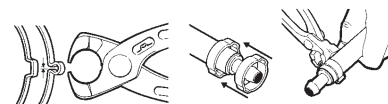
WATER LINE RESTRICTOR

Fits snugly in a 3/8" bypass line with a 4mm inside diameter to change water flow to exhaust.

Description	Part No.
Water line restrictor	56-9002



SQUEEZE ON STAINLESS STEEL CLAMPS



Description	Part No.
Pincer Tool	59-4015
Clamp for 3/8" Water Line (10 pcs/pk)	59-4017
Clamp for 1/2" Water Line (10 pcs/pk)	59-4018



STAINLESS STEEL HOSE CLAMPS

Description	Part No.
#5 Clamps (for waterline)	64-0030



RIVA EXHAUST STINGER WATER FILTER/RESTRICTOR

Features fine mesh stainless filter screen that is threaded to accept Mikuni main jet (not included) for water restriction. Allows removal of restrictive filter screen in water distribution manifold of single, twin and triple exhaust systems, providing increased cooling water to motor.

Description	Part No.
Exhaust Stinger Water Filter/Restrictor 3/8"	RY15-SF38

WATERPROOF SWITCHES AND BRACKETS

- Features waterproof on/off switch that is available with machined aluminum clamp-on or switch mounted bracket. Allows totally reliable control of bilge pump operation.
- Mounting bracket is machined from billet alloy. Available for clamp-on bar mounting or to bolt to bottom of on/off switch.
- Switch is available separately and has 9 ft. wire harness.



Yamaha Part No. 57-3017
All



Description Part No.
Handle Bar Mount Universal 57-3006



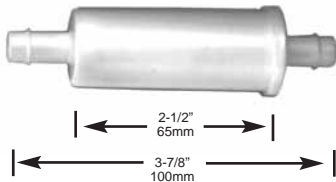
Kawasaki Part No. 57-3015
All 650's / 750SS-95 / XI-93



Kawasaki Part No. 57-3003
440/550/750SX/750SXI/800SXR



Description Part No.
Standard Switch with 9 feet of wire 57-3009



FOR FACTORY PIPE CHAMBER WATERLINE

Description Part No.
Waterline Inline Filter COMFTG036



UNIVERSAL HANDLEBAR MOUNT SWITCH

Mounts to underside of most aftermarket throttle levers. Complete with 9' wire, 12V/6A push on/off switch

Description Part No.
Handle Bar Mount Switch JP7043

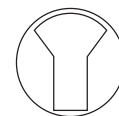


3-WAY PANEL MOUNT ROTARY SWITCHES

Connects to two electronic accessories for power control. Allows the operation of one or both accessories to run at the same time. Suggested uses: Second Bilge, Ignition, etc.



Left Hand On Position
Use: Blue & Red Wires



Center Off Position



Right Hand On Position
Use: White & Red Wires

Description Part No.
Panel Mount Switch 57-3020



WATER STRAINER

The **Water Strainer** is a must to trap all sand, shell, and vegetation particles.
No more clogged water lines!!
Height=2" (51mm)
Footprint= 2-1/2" (64mm) - Round

Description Part No.
1/2" Water Line Strainer 56-9005
3/8" Water Line Strainer 56-9006
#20 Mesh Replacement 20420020
#40 Mesh Replacement 20420040
(#40 is finer than #20)



LOW PROFILE WATER STRAINERS

Smaller water strainers. Ideal for using with water injection or tight space.
Height: 2-3/8" (60mm)
Footprint: 1-3/8" (35mm) - Round

Description Part No.
1/2" Water Line Strainer 56-9010
3/8" Water Line Strainer 56-9011
#20 Mesh Replacement 10486
#40 Mesh Replacement 10485
(#40 is finer than #20)



PANEL MOUNT SWITCH GUARD

Description Part No.
Switch Guard FEN-JP001

FUEL SYSTEMS	ENGINE/GASKETS	EXHAUST	DRIVE LINE HANDLING	ELECTRICAL	WATERLINE /BILGE	STEERING & CONTROLS	BODY	ACCESSORIES	SERVICE TOOLS /HARDWARE	CHEMICAL	FREESTYLE & 800SXR	FOUR STROKE
--------------	----------------	---------	---------------------	------------	------------------	---------------------	------	-------------	-------------------------	----------	--------------------	-------------



RULE BILGE PUMP



PWC AUTOMATIC 500 GPH PUMP

Automatically removes water from engine compartment. Cycles every 20 seconds to check for water. Equipped with gasoline resistant strainer base and 72" wire leads.

Description	Height	Part No.
500 GPH	4" (102mm)	25S-6WC



Description	Hose	Height	Part No.
500 GPH	3/4"	3-1/2" (89mm)	25D
800 GPH	3/4"	3-3/4" (96mm)	20R



Description	Hose	Height	Part No.
1100 GPH	1-1/8"	4-1/4" (108mm)	27D



RULE STRAINER BASE & S/S DEBRIS STRAINER

Description	Part No.
Blue Plastic Strainer Base	57-4006
Gas Resistant Strainer Base	57-4007
Stainless Steel Debris Strainer	57-4025



PLASTIC HOSES AND FITTINGS

Description	Part No.
3/4" Hose 12" Length	57-4008
1-1/8" Hose 12" Length	57-4009
1-1/8" Straight Fitting	57-4011



RULE-MATE FULLY AUTOMATED BILGE PUMP

All in one pump and switch system. Extra long life Heavy Duty Motor. Non-contact, mercury free float switch.

Description	Hose	Height	Part No.
500GPH	3/4"	4" (102mm)	RM500
750GPH	3/4"	4" (102mm)	RM750
1100GPH	1-1/8"	4" (102mm)	RM1100



STRAIGHT BILGE FITTING

Aluminum through hull outlet fittings.

Description	Part No.
3/4" Silver	57-4012
3/4" Black	57-4015
1-1/8" Silver	57-4018



45 DEGREE BILGE FITTING

Description	Hose	Part No.
3/4"	Silver	57-4021
3/4"	Black	57-4023



PHOTO COURTESY OF JEFF HAIN



SXR 800 RULE BRIDGE MOUNT BRACKET

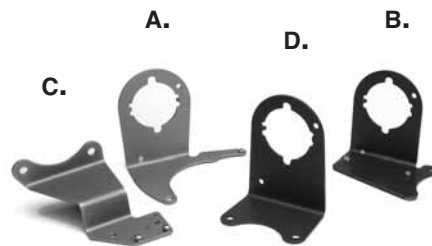
The R&D Bilge Pump Mount Bracket bolts securely to the hull developing a secure surface to hold the bilge pump in place.

Kawasaki	Part No.
800SXR	660-80000



DUAL BILGE PUMP MOUNTING BRACKET

Description	Part No.
Kawasaki 800SXR	KASXAL441
Superjet 96+	YA96AL441



BILGE PUMP BRACKET

Yamaha	Part No.
A. WaveBlaster/701 Super Jet 95+	57-3029

Kawasaki	Part No.
B. 440/550	57-3023
C. 650SX/X2, 550SX, 750SX, SXI	57-3024
D. 750SS/XI/ST/STS	57-3025



WATERPROOF TERMINAL KIT

Japanese OEM type connector Kit.

Description	Part No.
2-Pin Terminal Kit	55-2050
3-Pin Terminal Kit	55-2051
4-Pin Terminal Kit	55-2052



BILGE ELECTRICAL PARTS KIT

Kit contains waterproof fuse holder, 6amp fuse, ring terminal, shrink tubing.

Description	Part No.
Bilge electrical parts kit	57-3030



JAPANESE OEM STYLE CONNECTOR

Description	Part No.
OEM Style Electric Connector Kit 5pcs/pk	55-2035
Dealer Kit 20pcs/pk	55-2037



ADHESIVE LINED HEAT SHRINK BUTT CONNECTORS

Best used where moisture and corrosion is a problem. After crimping these terminals to wire, heat is applied enabling the adhesive within each shrunk tube terminal to melt and flow evenly to seal the connection against the harshest environment.

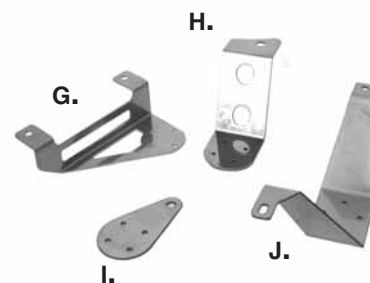
Description	Wire Range	Part No.
10pcs/pk Pink	22-18 (0.3-0.8mm)	55-2040
100pcs/pk Pink	22-18 (0.3-0.8mm)	55-2041
10pcs/pk Blue	16-14 (1-2mm)	55-2042
100pcs/pk Blue	16-14 (1-2mm)	55-2043



JAPANESE OEM TYPE WATERPROOF TERMINAL REPAIR KIT

Using the precision crimp tool provided, guess work is eliminated. Various pin sizes, connectors and waterproofing seals are provided for maximum flexibility in your electrical repair. Made in Japan.

Description	Part No.
Waterproof Terminal Kit	59-0601



SE BILGE PUMP BRACKET

Kawasaki	Part No.
G. 750SXI-Pro	WJ7701

Sea Doo	Part No.
H. SPX 97+, XP-96	SE-044014
I. HX	SE-044013

Polaris	Part No.
J. Polaris -98	SE044011

FUEL SYSTEMS	ENGINE/GASKETS	EXHAUST	DRIVE LINE HANDLING	ELECTRICAL	WATERLINE /BILGE	STEERING & CONTROLS	BODY	ACCESSORIES /SERVICE TOOLS /HARDWARE	CHEMICAL	FREESTYLE & 800SXR	FOUR STROKE
--------------	----------------	---------	---------------------	------------	------------------	---------------------	------	--------------------------------------	----------	--------------------	-------------



A.



B.



C.

BILLET QUICK DRAIN FOR KAWASAKI

Mounts to the transom of your Kawasaki 1200 STX-R or SX-R 800 watercraft with billet aluminum mounting plate.

UNIVERSAL BILLET QUICK DRAIN

Mounts to the transom of any watercraft with billet aluminum mounting plate.

Kawasaki	Part No.
1200 STX-R, 800 SX-R	57-4065

Description	Part No.
Billet Quick Drain Kit	57-4059



D.



E.



DUCK BILL DRAIN SYSTEM

Simple and clean, drains water from hull under acceleration.

- A. Add to your current drain plug or
- B. Purchase entire system kit.

DRAIN PLUG

The replacement drain plug at a fraction of manufacturer's prices. Our floating drain plug is oil and fuel resistant. Just flip or twist to install.

DUCK BILL DRAIN ADAPTER PLUG

Unscrew stock drain plug and screw our duck bill drain plugs in place. Keep your stock plug if you ever need to change!

Description	Part No.
-------------	----------

A. All SeaDoo (Except XP) All Sit down Yamaha/*Kawasaki	57-4050
B. Universal (Complete System)	57-4060
C. Duck Bill Flapper only	57-4055

Description	Part No.
D. Sea Doo & Polaris	57-4058
E. Pre 95 Sea Doo & Polaris	A2385

Description	Part No.
Kawasaki	Z471
Yamaha	Z472

*Kawasaki models require slight modification



ONE WAY VALVE

Unlike scupper valves that mount on the exposed exterior of your ski, our one way valve kits install "into" the rear 1/4 of your PWC end caps. This keeps continual water pressure on the inside of the tube, keeping the valve shut when the ski is floating.



SCUPPER VALVE ASSEMBLY

24-7 drain valve has an aluminum flap, that does not bend or warp, greatly improving the seal. For Freestyle use only.



BILGE SPONGE

This Viscose-Covered sponge will pick-up and hold an amazing 32 ounces (512gm) of water without leaking. With grommet and hand cord.

Description	Part No.
800SXR	KASRCO161
SJ, KAW750, OCTANE	AWCO161
Pro Finish Kit	AWCO163

Description	Part No.
Scupper Valve Assembly	SV-001

Description	Part No.
Bilge Sponge	57-4070